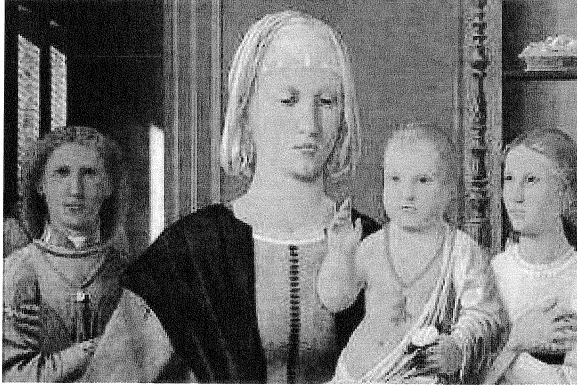


BroadwayWorld.com, January 14, 2014

PIERO DELLA FRANCESCA: PERSONAL ENCOUNTERS

Opens Today at the Met Museum



Through a special collaboration with the Gallerie dell'Accademia, Venice, and the Galleria Nazionale delle Marche, Urbino, The Metropolitan Museum of Art will host a focused presentation on the devotional paintings of Piero della Francesca, addressing Piero's work for private devotion for the first time. The four works on view have never before been brought together; the exhibition, therefore, promises to make an important contribution to the study of this major figure of the Renaissance.

Piero della Francesca: Personal Encounters, on view at the Metropolitan Museum beginning today, January 14, will consist of the following paintings: Saint Jerome and a Donor from the Gallerie dell'Accademia, Venice; Madonna and Child with Two Angels (the Senigallia Madonna) from the Galleria Nazionale delle Marche, Urbino; Saint Jerome in a Landscape from the Gemaldegalerie, Berlin; and Madonna and Child from a private collection in New York.

The exhibition is made possible by the Foundation for Italian Art & Culture (FIAC). It was organized by The Metropolitan Museum of Art in collaboration with FIAC, in celebration of the opening of the New European Paintings Galleries, 1250-1800.

The loan of the Madonna di Senigallia is by arrangement with the Ministero dei Beni e delle Attività Culturali e del Turismo and the Italian Carabinieri Command (CCTPC), working together with la Soprintendenza per i Beni Storici Artistici ed Etnoantropologici delle Marche - Urbino, as part of 2013 - Italian Year of Culture in the United States.

Exhibition Credits: The exhibition is organized by Keith Christiansen, John Pope-Hennessy Chairman of the Department of European Paintings, and Andrea Bayer, Curator of European Paintings, at The Metropolitan Museum of Art.

Publication: The exhibition will be accompanied by a brief catalogue with essays written by Keith Christiansen. It will be published by The Metropolitan Museum of Art and distributed by Yale University Press, and will be available for sale in the Museum's book shops.

The catalogue is made possible by The Christian Humann Foundation. Additional support is provided by Jane Beasley, in memory of John P. O'Neill.

Related Programs: Education programs will include a Friday Focus Lecture on February 28, 2014 and exhibition tours.

Additional information about the exhibition and its related programs will be available on the Museum's website at www.metmuseum.org.

Website: <http://www.broadwayworld.com/article/PIERO-DELLA-FRANCESCA-PERSONAL-ENCOUNTERS-to-Open-114-at-the-Met-Museum-20140113#>